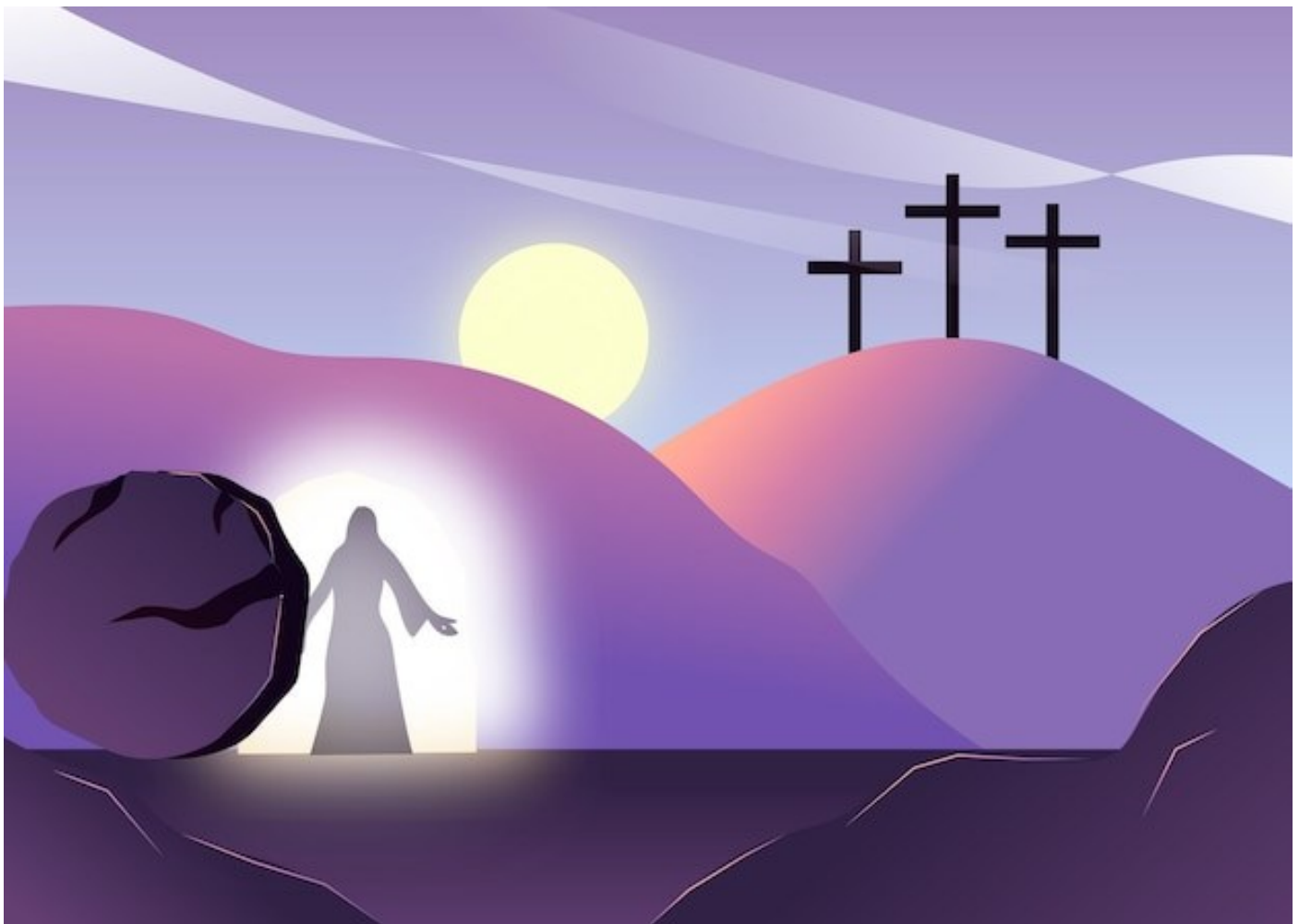


THE LINK

Includes the Circuit Plan

Issue 61 March / May 2024



CIRCUIT SUPERINTENDENT:	Rev. Jacqui Horton	01760 720858
CIRCUIT MINISTERS:	Rev. Anne Richardson	01362 695582
	Rev Jonathan Bell	01263 710009
	Deacon Jen Woodfin	01760 720858
PIONEER RURAL CHURCH PLANTER:	Mrs Samantha Parfitt	07725 077810
CIRCUIT ADMINISTRATOR:	Marianne Lincoln e-mail centralnorfolk@outlook.com	07736 467831
CIRCUIT SAFEGUARDING OFFICER:	Mrs Samantha Parfitt	07725 077810

See page 3 for deadlines and Editor's contact information

MINISTER'S LETTER



I'm writing this mid-January and you're reading this in March. Today the earth is hard and frozen, but hopefully by March, Spring will be well on the way and we'll be looking forward to summer. The seasons change as they have always done. Time moves on.

I'm writing this in the season of Epiphany and you're reading this in Lent. Today we are following the star with the wise men and thinking of the miracle of water into wine at the wedding in Cana. In March, we are following Jesus on his journey to Jerusalem, waving our palm leaves and watching as he heads for the cross. The season will soon change to Easter as we celebrate the resurrection. Time moves on.

Every year we celebrate the same seasonal changes. Every few years there are further changes in our Methodist system as ministers move - we say farewell (dates are already set) and then we say hello! Things change and time moves on.

I was walking along a path, part of the Jubilee Trail, the Wendling Way, from Dereham to Gressenhall. A new hedge has been laid, but done in the traditional manner. It's dormant at the moment but I expect new shoots will soon cover it in green. Old skills passed on, new growth. Time moves on.



So what I'm I trying to say? We are all too well aware of the changes to seasons, to church life, to our own lives. Through it all, there is the constant love, mercy and grace of God, holding us firm. 'Great is thy faithfulness, O God my Father, there is no shadow of turning with thee! Thou changest not, thy compassions, they fail not, as thou hast been, thou forever wilt be!' This is one of the hymns that hasn't been modernised in its language. I sing it with gusto! I wonder, though, how our hymns and all we do in our churches, appear to others. Are we simply to maintain things as they have been? We've been doing this for too long and you may have noticed the results. God's truths remain the same but we must find ways to communicate them afresh to the folks around us. However tempting it is to look back, to keep the old, to repeat the same, we must also be faithful to the future, continually looking to our mission. We have the same framework, but it needs to have new shoots, new growth, or it will simply die back.

[Continued on page 4]

THE LINK

This is another very full edition of The Link. As Editor, I find a tremendous privilege to be on the receiving end of so much material about what God is doing through us in our various churches. A big thank you to everyone who has contributed in any way and for so many of you managing to send your items in good time—that is a tremendous help and makes my life much easier.

It is very easy to concentrate just on our own church whether it be large or small and overlook what is happening elsewhere. It is also easy to think back at what happened years ago and regret it's not happening now. Thank God for what happened then—and thank God for what is happening now. I don't know about you but personally I worship a living vibrant God who is constantly growing and developing his plans for us. A hundred years ago the church, and the world, was very different to what it is today. In a hundred years time the church, and the world, will again be very different to what it is today. Let's live for God an exciting life in his exciting world now.

This edition is full of excitement, do read it

carefully and look for new initiatives and reports of what has been happening. For example, on page 6 there is an article about the World Day of Prayer. I know of five of our churches which are hosting or participating in this. Give thanks for the Palestinian women who have assembled this service especially at this difficult time. (If your church is involved and hasn't been mentioned it's because I wasn't told!).

This edition covers the second major Christian Festival of the year—Easter. Do take some time to pause and let your mind really run through everything that happened then. And then think of the consequences of that for us now. It offers us the opportunity of a relationship with God almighty. And God cares for us in our insignificance. When I was a boy my science teachers told me that the Sun was the only star in the universe that had planets. We now know that trillions of stars have multiple planets. What a universe—what a God!

Blessings

Tony Hey

DEADLINE

**FOR THE
JUNE—AUGUST
EDITION**

SATURDAY APRIL 27th

*Please include details of activities
up to the end of August*

CONTACT DETAILS

Please send information for
publication to
Tony Hey

E-mail: t.hey@btinternet.com

Phone: 01263 713302

Address: 4 Burrell Close
HOLT
NR25 6DT

METHODIST CHURCH'S WORLD MISSION FUND

EASTER OFFERING

From Elizabeth Wright: On behalf of the Methodist Church's World Mission Fund may I thank everyone who so generously donated to last year's Easter Offering. We were able to forward £959.61 to help financially sustain this work.

This year's thanksgiving service has been planned for 12th May, 3.00 p.m. at Dereham Trinity and our MWiB District president, Sue Groome, will be participating in worship. The service will be followed by the customary 'Bring and share' tea which offers an opportunity to catch up with old friends and make new ones. Everyone is invited to join with us for this event.



**WORLD
MISSION FUND**

Our Spring District day is due to be held at Diss on Thursday May, 16th. Our speaker will be Madeleine Reed, the MWiB Helen Kim scholar. She will be talking about her work with younger women. Further details will be circulated in due course.

MINISTER'S LETTER

[Continued from page 2]

John Bell and Graham Maule have a hymn for Easter (StF 296). The last verse:

Christ has risen and forever
lives to challenge and to change
all whose lives are messed or mangled,
all who find religion strange.
Christ is risen. Christ is present,
making us what he has been -
evidence of transformation
in which God is known and seen.

May God transform you by the Spirit,
challenging and encouraging, bringing us
into new growth, for things change and time
moves on, and that's all part of God's plan.

Anne Richardson

TITTLESHALL AND HELHOUGHTON FOODBANK DONATIONS

Items both perishable and non-perishable donated last year to the Mid Norfolk Foodbank via the collection points at Tittleshall Chapel and Helhoughton Church Hall amounted to **600kg**, which helped **1,200** families. More and more people are having to use foodbanks so thank you very much indeed to everyone who supports those in need in this way. Your generosity is amazing and you are literally helping the hungry to survive.

Could your Church act as a collection point too? Just a thought!

*Elizabeth Lodge
Tittleshall Methodist Chapel*

MALCOLM COOK

1947—2023

Who will do my Tiling?

Just a moment ago I heard the news.

The news that my Dad had passed away.

Your life flashed before my eyes,
Desperately trying to lock in the memories forever so I wouldn't forget you.

But who will do my tiling?

Nala knew, and she tried to make us understand,

We dismissed it until we got the call.

Thinking this must be a mistake,
Because.. Who would do my tiling?

We saw you in the chaos and we saw you in the peace that followed.

I held your hand, but it didn't feel like you.

I stroked your skin to try to force some hope through a hopeless connection.

I realised I was just saying goodbye.

I think you'll enjoy the next part of your journey, as we embark on ours.

Things will change, Christmas will be different.

The same jokes I'll try to remember,

But who will do my tiling?

Well, I have come to realise,

I will do my tiling - because you taught me well.

The sockets will change, and the lights will glow - because you taught me well.

I've learned to hold my family tight - because you taught me well.

I can drive for miles and miles - because you taught me well.

I keep the offcuts and save the screws - because you taught me well.

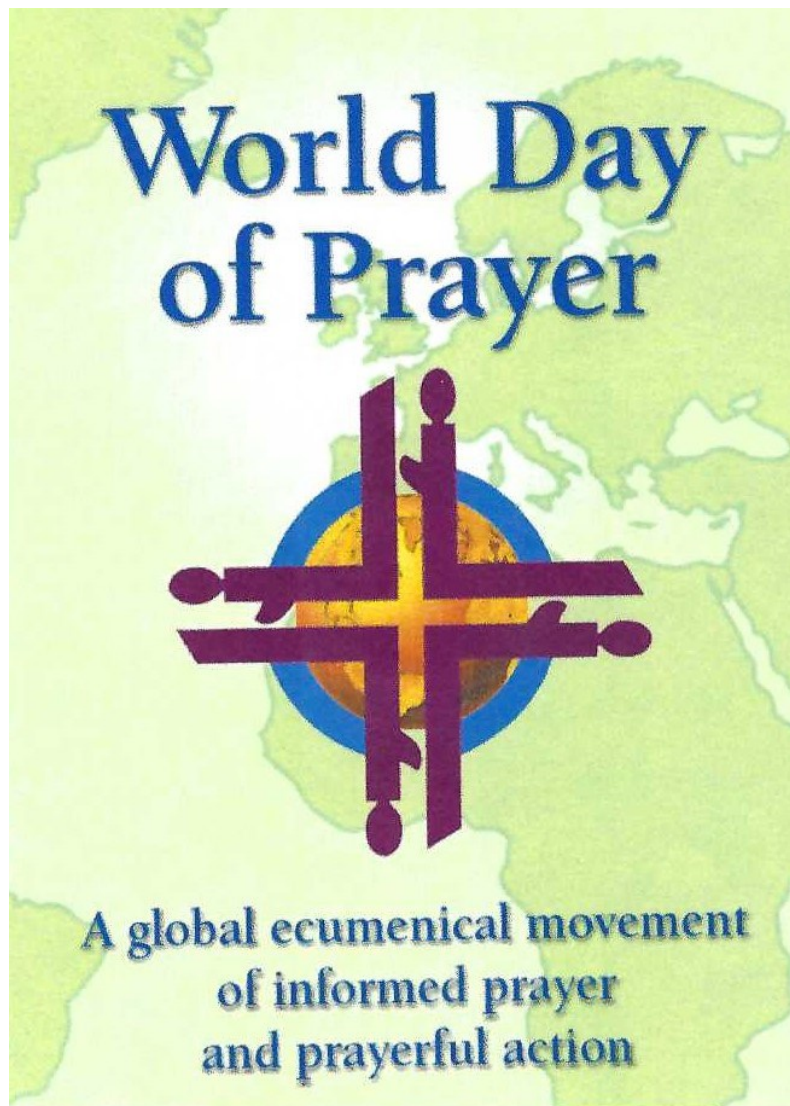
I can do anything - because you taught me well.

I am the man I am - because you taught me well.



Rupert Cook

[Rupert read this poem, which he had written as a tribute to his father, at Malcolm's Thanksgiving Service]



The World Day of Prayer is an international ecumenical Christian laywomen's initiative. It is run under the motto "Informed Prayer and Prayerful Action," and is celebrated annually in over 170 countries on the first Friday in March.

Through the World Day of Prayer, **women are encouraged to become aware of the other countries and cultures and no longer live in isolation.** They are also encouraged take up the burdens of other people, to sympathize with the problems of other countries and cultures and pray with and for them.

This program calls us to bear with each other in love, despite all difficulties and oppression. The program was written by a group of ecumenical Christian Palestinian women in response to the passage from Ephesians 4:1-7. They reflected collectively on this theme from the context of their suffering as Palestinian Christian women. They hope to inspire other women around the world to bear with one another in love during troubled times.

We have been told of services taking place in the following places within our area:

- | | |
|--|---|
| 11.00 a.m. Holt Methodist Church | 2.00 p.m Swaffham Parish Church |
| 2.00 p.m. Mattishall Methodist Church | 3.00 p.m. Wells Methodist Church |
| tbc Watton Home Church | |

EVENTS AT SWAFFHAM

As you can see from this photo Swaffham Friendship Group enjoyed a Christmas meal out. Lots of fun and friendly banter and they all received a small gift. A lady who doesn't come to our meetings was sitting by herself, and was very pleased to be asked to join us at our table. Friendship in action!

Below are a selection of Jacqui and Jen's Nativity Sets which we were pleased to be able to display to the public. Here you see Jacqui waiting for the first visitors and we did have around 70 people through the day. So thanks go to Jacqui and Jen.



Right up to date now, we began the New Year with a Beetle Drive at our Friendship Group meeting. Honestly, the concentration was something to behold and the pictures of beetles were amazing! Some had extra legs and one even had eye lashes! A fun filled afternoon.

EASTER AT LITCHAM

We will following our now traditional pattern of celebrating the Easter season, beginning with a Processional Service around the village along with our (cut-out) donkey on Palm Sunday. We will meet at the chapel at 10.15 in order to begin promptly at 10.30. There will be some light refreshment and a time for fellowship afterwards. If you do not have your own service that day, do come and join us.

You will also be welcome at our Good Friday walk of witness which will leave Tittleshall chapel at 10.00 a.m., walking to the chapel at Litcham, a distance of around 2 miles in case anyone is considering walking with us. For the less mobile there will be an act of reflective worship at Litcham, which will begin at 10.15a.m. Again there will be light refreshment afterwards.

WHOLE HEARTED

In January, Geraldine Allen and Sarah Rodgers attended the Wholehearted Conference organised by the connexional Evangelism and Growth team. The purpose of the conference is best described in its own words:

“If you're seeking Spirit-led transformation in your church, circuit or NPNP, gather together with other Methodists to seek God, share stories, inspire one another and get unstuck. This weekend conference aims to help us all ‘see the wood for the trees’ by having some time away from our local contexts, opening us (we pray) to the bigger picture of the Missio Dei. It is time carved out for the ‘important non-urgent’ work of seeking God, discerning vision, engaging in strategic planning and workshopping knotty problems.”



Sarah and Geraldine with Trey Hall, the Connexional Director of Evangelism and Growth.

Sarah writes: Two hundred Methodists gathered from across Connexion and Geraldine and I were invited as Pioneers on the Methodist Pioneering Pathways and because of our programmes at The Hive. (*‘Seeds of Spring’* is hot off the press and you can see it elsewhere in The Link!)

Running from Friday evening to Sunday afternoon, there was a packed programme of worship, workshops, prayer and practical activities wrapped up in conversations, witness, sharing and discovery. It was an immersive

experience and a privilege to spend uninterrupted time on things of the Spirit, led by inspirational speakers.

Music for worship was presented by members of The Spirituals, Gospel Choir who brought a spontaneity and freedom to every session as both singers and instrumentalists.



CONFERENCE

There was such a rich spread on offer, it was difficult to make choices. To sample but a few:

- Getting started with children's, youth or young adult ministry
- Dual transformation, discipleship and the four quadrants
- Church at the Margins: If poverty contradicts the will of God, what is ours to do?
- A group conversation about discerning God, leadership and an ever-changing landscape.
- Inclusive Evangelism: the unique selling point of the Methodist Church?
- Creative ways of reflecting: a hands-on workshop
- Sofas not Stages: creating brave and safe spaces for real talk
- How to give Sunday worship a Spiritual boost
- Pioneering 101: People not projects
- Called to smallness?

A treasured moment of the conference was when Becca Byass (one of Rosemary Wakelin's grandchildren!) gave a personal view on well-being and spiritual refreshment.

There were many such moments and we felt very blessed to meet old friends, make new friends and hear about many inspiring examples of God at work in the world – from agricultural ministry to building local communities, all with the common thread of starting not from where the church is, but from where the people are.

Here are three take-aways for further thought –



From the workshop on dual transformation: In the TV show *Love It or List It*, Kirstie and Phil help homeowners decide whether to renovate their existing home, or sell up and start anew somewhere else. In this workshop, Methodism's 'Kirstie and Phil' introduced us to a visual tool to think this through in relation to church: should we focus our energy on the new expressions of church, or is it better to transform what we already have, in order to make a vibrant disciple-making community?

From the workshop on a conversation about discerning God, leadership and an ever-changing landscape. The world has changed, expressions of church and faith are changing, and culture is changing. Leadership needs to be adaptive and agile, responding to the changing context. Let's discover together what's working and what God might be saying and doing.

From the workshop on called to smallness: In this workshop we heard voices from around the church, including from rural communities, and were asked to rethink the way we might embrace smallness as a missional strategy, and as a theological mindset.

From such a banquet, we both felt truly fed and look forward to sharing that nourishment with others.

WALSINGHAM CHAPEL



The Pilgrim Methodist Church

Walsingham



Over the past three months, we have continued with our monthly services and meals. It's always a great and blessed time together that we all look forward to. The kitchen is very small but it is amazing the food we can serve up.



Our services on this plan are on the second Sunday of each month with Pippa accompanying our singing on the pipe organ as usual.

March 10th April 14th May 12th

Also on Saturday June 8th, we will be hosting a District Service led by Revd Julian Pursehouse who offered to come to Walsingham to worship in the chapel and take our 230th anniversary service before he leaves the District. Do save the date.



We have been assessing the ceiling and roof void, which has been an interesting and worthwhile venture. The view from the top of the scaffolding is certainly interesting and it seems a long way down standing with your head on the ceiling!

It's amazing to think that Hazel Yarham's father, Herbert Sadler, used to do work on the chapel and ceiling using just ladders. He must have had nerves of steel but survived to tell the tale. Gratifyingly the lime plaster and lathe ceiling is sound albeit in need of decoration and repair which we would hope to have done in due course.

Looking from above was also educational. As far as we are aware, no one has looked in there for 38 years. Seeing the original 230 year old timbers and later ceiling supports gave us a fascinating insight.



Overall, we are looking forward to an interesting 2024 as we worship and share fellowship together. Do come and visit the chapel or join us in worship if you are in the area.

SEEDS

OF

SPRING



THE HIVE

CREATIVITY ~ SPIRITUALITY ~ WELL-BEING

**March 9: 2.30 – 4.30
Yoga Workshop**

**March 16: 2.30 – 5.30
Spring Sing (Casual Choir)**

**March 22: 11 – 12.30
Norfolk Nostalgia (Talk)**

**March 24: 2.30 – 5.30
Open Play Reading**

**March 30: 11– 3
Easter Saturday Walk**

**March 8: 11 – 12.30
Weather Watch (Talk)**

**March 1: 11 – 12.30
Celtic Journeys**

**February 24: 11 – 3
Retreat Day**

**February 17: 3 – 4
Stretch and Breathe**

**February 15: 3 – 4 (Chat)
Thoughts on Thursdays
also February 29 / March 28**

**February 11: 3 – 4
Bring a Book! (Chat)**

**FIND OUT
MORE!**



**All our events are
free - donations
welcomed**

Chalk Hill, Great Cressingham, Norfolk IP25 6NP

Find us with What3Words: winds.fuzzy.stages

E: thehiveplace@gmail.com T: 07976 286 645



Email: thehiveplace@gmail.com



NEWS AND VIEWS

from (one of) the Pews at Watton

Since the last edition of The Link things have been plodding along at Watton – no particular projects in hand at present but continued, gentle plodding. And plodding has its merits don't you think? It beats giving up, stomping off or surrendering to cries of 'We're too old, we can't do it and why bother anyway.' So, we plod and let's not underestimate the power of the plod.

Some might say we plodded through Christmas with the usual events to mark the festive season. The Church was beautifully decorated with hundreds of tiny sparkly lights including some reflected onto the ceiling via a magic bit of Martin's technology. The tree glowed in the corner and each window – sill declared its message in green and gold and red. How gorgeous was that, to come into on Christmas Eve, with candles burning, organ playing and a smiled welcome everywhere. This year members of the organisations which use the Methodist Centre next door were invited to participate by reading the lessons: a gesture apparently appreciated by everyone. We sang Carols old and new including one, set to 'Walking in the Air', which was written by John Darby, one of our oldest and most respected members.

Earlier in the week and more informally, the centre was packed for Coffee Cakes and Carols which followed (or sort of morphed into) the Wednesday morning Coffee Morning. This really is an example of plodding on. The first year we tried this very few people stayed to sing, but undaunted we continued to believe in this aspect of outreach and we were full, with a few folk saying they actually came **because** of the prospect of singing carols afterwards.

At Christmas time it is customary to hold a sale of some sort and this always proves very successful financially and socially. But it is VERY hard work for a small number of people so this year came the suggestion that, at the December Coffee mornings we might try a Christmas Fair in inSTALLments with a few people getting together to run a different stall each week: No pressure, not a lot of work but a nod in the right direction and an indication that we're not dead yet. It has to be said that this idea did not meet with unbridled enthusiasm: however the Power of the Plod kicked in and, with the support of the faithful few, we raised a modest but useful £223.

In January Rev Jacqui and Deacon Jen led us through a solemn and rather emotional Covenant service where we promised – in effect – to keep plodding along.

And the following week one of our resident Local preachers Alan, took the words of the early disciples – 'Come and See' and challenged us to invited folk to do just that. At first this worried me, 'And what will they see when they get here?' I thought 'A collection of elderly people, sometimes some fairly dreary hymns and possibly quite a long 'message'.

But this isn't the whole story is it? What they may also find is kindness, care, examples of life long faith played out in the world, with a great deal o loving support and experience.

Could these qualities be valuable contributions? in todays chaotic communities – the missing PEACE in the jigsaw of life perhaps?

YES! We do need to modernise and embrace the opportunities of the day, YES! We do need to think more about where folk actually are, and meet them there: over coffee, sales tables, in schools and youth organisations, picnics, and in the High Street and together we can move on into the future.

Lesley Cowling

(I should say that these are my views and not necessarily those of the management!! Or anyone else for that matter.)

SAHAM HILLS

From Dot McIlroy: A busy two months for us here starting with our Remembrance Day Service on the 12th November. The chapel was decorated with poppies and we welcomed some extra congregation. Dee Moden kindly officiated a lovely thoughtful service which was enjoyed by everyone. The picture of the stones displayed on the altar have the names of soldiers from Saham Hills lost in the 1st World War, they are always remembered. During November we redecorated the chapel for Christmas with festive floral displays ready for our Christmas Coffee Morning which was held on 25th November which was a great success with mince pies and a good Christmas market. We really do have to thank our small group of regular residents and congregation who attend our events.



On Monday December 4th we welcomed The Women's Institute for their carol service and a very enjoyable afternoon it was, the chapel was full, plenty of carols accompanied by the organ and a handbell concert given by two musicians from The Wayland Players, all followed by tea and cakes. Our own carol service was on 17th December, our last service of the year. Jen kindly came to lead our service and brought along some of her and Jacqui's nativity sets for display which were greatly admired and we were pleased to have the chance to see them. Jen not only led the service but played the organ as well which helped us sing even better so a big thank you to Jen for visiting us at such a busy time.



We wish everyone and every chapel a Happy New Year.



"ONE MISSING"



Robert Sutherland writes: Norfolk band "One Missing" played at Holt Methodist Church raising £271 for the Light and Life project.

An audience of church members, visitors and residents enjoyed a selection of popular music scanning the decades.

The band featured: Mike Denmark, vocals and bass, Dave McNeill, guitar and vocals and Robert Sutherland on brass and harmonica. As the band name suggests, other musicians augment the ensemble depending on event and venue.



Photo courtesy Sally Jones

Band Bookings: 07887 503867
07921 664595

HOLT'S DEVELOPING CHOIR

Even during the worst of times good may emerge. As we were stumbling through the dark Covid night something hopeful glimmered at Holt Methodist Church. We formed a choir!

It's been proved that making music is beneficial to health and self-esteem. This is especially true of singing with other people.

A legal clause allowed for a small singing group in churches. Initially we stood behind Perspex screens, like a poor man's television. Happily, restrictions were gradually lifted.

We have twelve members, quite a Biblical number and welcome new singers. The group meets fortnightly on Friday evenings. Although the singing lasts an hour, our members are so friendly that conversation continues for a good while afterwards. Many seem reluctant to break up the gathering and go home.

"Make a Joyful Noise Unto the Lord."

Yours in song

Robert Sutherland

Future practice dates at Holt (7.00 p.m.):
8th March, 22nd March,
5th April, 19th April



75th ANNIVERSARY OF THE LEADERS OF WORSHIP AND PREACHERS HOMES

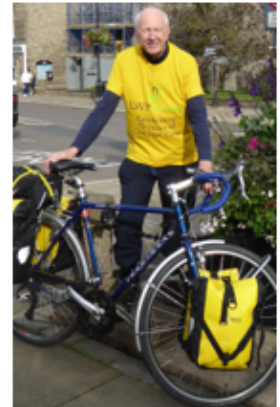
Robert Davie, who owns a cottage in Walsingham, is undertaking a solo cycle ride to celebrate the 75th Anniversary of the Leaders of Worship and Preachers Homes (LWP Homes - formerly LPMA Homes). The first Home was opened in 1949 at Westcliff-on-Sea in Essex and is now known as Westerley Christian Care Home, run by LWP Homes. Robert will start cycling on April 16th at Westcliff, passing through Walsingham on his way to Westerley, Woodhall Spa. He will then visit Epworth Old Rectory, being an important site of our Methodist heritage, en route for Gainsborough House near Sherborne, an LWP Homes-run independent living complex. The final leg of the journey will take him to Westerley, Minehead, thus visiting all 4 LWP Homes sites in the UK.

While in Walsingham over the weekend of 26th – 28th April he is planning to visit Walsingham MC on the Friday as well as the Methodist Heritage Centre at Wighton and Wells Methodist Church on the Sunday.

The aim of the Bike Ride is to raise awareness of the work of LWP Homes, so any support would be greatly appreciated.

[As you will from this map Robert is planning to visit both Walsingham and Wighton Heritage Centre during his sponsored cycle ride. If you would like to sponsor him details are on the flyer. Ed.]

Why cycle 550 miles?



In Celebration of 75 Years of Christian Care!

LWPHomes (formerly LPMA Homes) has been supporting Leaders of Worship and Preachers in need for 75 years – the first Home was opened at Westcliff-on-Sea in 1949. Our celebrations for this special anniversary include a 550+ mile cycle ride to visit each of the LWPHomes.

Our cyclist, Robert Davie, is asking for your support to make people aware of the care given to our residents in LWPHomes.

To read more, and to donate if you wish, please go to JustGiving and search Robert Davie, LWPH or scan the QR code below.



JUST ONE MINUTE

People who know me in Saham Hills know my garden means a lot to me, not being able to get out much it is my hobby, my exercise, my quiet place and my wellbeing space.

I have a small plum tree in a raised bed, now six feet tall but still a thin trunk and three patio pear trees in very large pots. All were planted four years ago and so far two plums and no pears. I am not too worried about fruit as the blossom in spring is glorious but a friend suggested putting a grease band around the trunks which might help the pollination as it could stop the ants, this should be done at start of winter. So, on Tuesday 5th December after our first very cold spell the sun was shining and I found myself sitting on my walker, well wrapped up ready to do the simple job of wrapping the bands round the four trees. Having not read the instructions beforehand, fatal mistake, it said the sticky side should be wrapped outside the bark; which meant opening the folded plastic, cut to size, wrap around the trunk and tie with string. I started with the plum tree as the trunk was a bit thicker than the pencil trunks of the pears but being knobbly the plastic would not stay in place for me to tie with string. I sat there annoyed, frustrated and thinking unkind thoughts, with sticky fingers, sticky scissors and string and near to tears. Just then a robin came and perched on the pot next to me, I said "what are you doing here" he didn't move, head cocked he just looked at me listening to my moaning until I had to smile. I did finish the trees and all day I smiled thinking of my conversation with a robin, or was it! God works in such mysterious ways.

Dot McIlroy

HELHOUGHTON MONTHLY CHARITY COFFEE MORNINGS

In the 9 months since we started collecting for local, national and international charities our generous customers have donated **£773**. An additional **£20** is donated to the Church (formerly Village) Hall each month, making a grand total of **£1,013** for the year!

Our next Tuesday Coffee Mornings are **10 - 12:**

Monday 25th March - RNLI

Tuesday April 23rd - Save the Children

Tuesday 28th May – Fakenham Charity, to be confirmed.

If you can join us and also bring along some of the much-needed items below for the Mid Norfolk Foodbank, for which we act as a collection point, that would be wonderful:

instant mashed potato / long life fruit juice / tinned vegetables / tinned tomatoes / jam

Thank you very much.

*Elizabeth Lodge
Tittleshall Methodist Chapel*

NEWS FROM CHURCHES

HOLT

We have had a very busy few months, celebrating Christmas in style including various Carol Services or Carol singing events (one of which was planned to be outdoors but the weather defeated us). There are articles about two other activities on pages 13 and 14.

Joselyn's Afternoon Teas are proving such a great success that this year they are being continued right through the winter and so far this has proved fully justified.

In common with a number of other churches in the Circuit we shall be participating in the World Day of Prayer on 1st March (see page 6).

At Easter for the Maundy Thursday service, we will be three churches altogether - Wells Methodist, Wells parish church (St Nicholas') and Holt Methodist. The vicar of the parish church (Brenda Stewart) will be with us as well, and she is great, so it should be a good service! On Good Friday we shall participate in our annual Walk of Witness along Holt High Street with the Parish Church culminating in a short service at the War Memorial. Easter Day will begin bright and early (the clocks change that day!) with our Sunrise Service on Spout Hills at 6.00 a.m. followed by breakfast and communion at 7.00. Our Easter Day communion is at the more civilised time of 11.00 a.m.

We have welcomed a number of visitors and newcomers recently which is both pleasing and encouraging and shows we are bucking the national trend by being a growing church.

At Pentecost we plan to hold our regular party in the Memorial Gardens in the centre of Holt once again. It's style and location attracts passers-by and lets people in Holt know who we are and who we stand for.

Work is continuing on our development project – Light and Life for All – and we are receiving a lot of very encouraging local support. We also had a very positive Vision Day on 13th January and lots of good, and practicable, ideas were generated. We held this at a local venue rather than the church and one unexpected spin-off was that it emphasised that **we** are the church, not the building, important though that is. Fund-raising is getting underway and it would be nice to think that physical work can begin later this year after so much time spent on preparation. We shall see.



HOLT METHODIST CHURCH
AFTERNOON TEA
FRIDAY 22ND MARCH
2.00 - 4.00 PM

DELICIOUS HOMEMADE CAKES
TOMBOLA , BRIC-A-BRAC, BOOKS



HOLT METHODIST CHURCH
AFTERNOON TEA
FRIDAY 19TH APRIL
2.00 - 4.00 PM

DELICIOUS HOMEMADE CAKES
TOMBOLA , BRIC-A-BRAC, BOOKS



HOLT METHODIST CHURCH
AFTERNOON TEA
FRIDAY 17TH MAY
2.00 - 4.00 PM

DELICIOUS HOMEMADE CAKES
TOMBOLA , BRIC-A-BRAC, BOOKS



WELLS

We have received all the necessary funding for our new heating system to be installed in the Peter Collingwood Hall. We are very grateful to North Norfolk District Council (Sustainable Communities Fund) and to The Holkham Estate for their grants and also to Church members for their support. We will all be very glad to be warm again!

We are very pleased that over the Christmas period we managed to raise £128.47 for the St Martins Housing Trust, Norwich, which caters for homeless people in Norwich, helping them to be integrated back into society.

Lent is always a busy period and, together with Churches Together in Wells and District, there will be three weekly groups meeting in the town with the same subject material, held at different times of day to accommodate most people. We will also be providing Lent Lunches every Friday in the Catholic Hall – a change from The Friends Meeting House – as we hope to attract more people to this central location. Each Church in Wells will take their turn to provide and serve the lunches and we Methodists start the ball rolling on Friday 16th February and finish on 15th March. The World Day of Prayer service is to be held in our Chapel at 3pm on Friday 1st March. Our final vigil “Stand together for Peace” is on the first Tuesday in March on Wells Quay from midday until 12.30pm.

On the afternoon of Friday 26th April we will be holding our Spring Sale with delicious refreshments and plants, cakes and much more for sale.

Happy Easter – our Dawn Service will be held near the Lifeboat House at 7.00 a.m. It's wonderful to see the sun rise on Easter Day!

NEW HOLKHAM

In December New Holkham had a lovely Carol Service led by Beryl Flood with a visit by Father Christmas.

On Christmas Eve the popular Carol Singing by New Holkham Chapel raised £225 for Action for Children. Many thanks to all who came out and were in good voice and the generous donations received. Included in the last house call were refreshments at Branthill Farm. Much appreciated.

BEETLEY

Rev. Gnanavara from Tamil Nadu, India, will be visiting this country during April and May and is planning to preach at Beetley on 19th May at 6pm. Many friends from around the Circuit will remember him and his wife Kiruba when they worked in this area some years ago.

SPORLE

Sadly one of our long-term members, Margaret Pomery, is now in a rest home and so unable to attend chapel. We wish her well and remember her in our prayers.

A retired local preacher in Swaffham Road seeks a Trinity member to either walk them to church or give them a lift in the summer months.

Also interested in going to meeting point. Phone 01362 693183

**This is payable.
Hilary Pegg**

CHURCHES

GARVESTONE

We continue to meet for worship at 3.00 p.m. until March 31st (when the clocks go forward), and that day we shall gather at 6.00 p.m. and do so until September 22nd, when the evenings will have started to draw in, and then we shall revert to 3.00 p.m.

We meet on the third Friday in our chapel at 2.00 p.m.; a few of us gather – but not as many as ought to – corporate waiting on God doesn't necessarily involve praying aloud!

About eight of us meet most weeks (usually on Thursday afternoons) at either our chapel or Mattishall, using a variety of study materials (to try to curb meanderings). Contact Andrew Durrant or Douglas Harrison for details.

MATTISHALL

As the new year progresses regular events are being held such as the Ecumenical Lent Course which started on 21st February. This is being held weekly at the Garvestone chapel at 2.00 pm and is being lead by Rev Tim Weatherstone from the Parish Church. We hope more will attend the monthly Charity Coffee Mornings as they commence on 16th March.

With the help of friends from Garvestone we will be hosting the annual World Day of Prayer service this year prepared by the women of Palestine. Members of the Mattishall Benefice and other local churches will be taking part as well. Friends from other chapels will be welcome to join us for the visit of Rev Andrew King who returns to the circuit to lead our 124th Chapel Anniversary service on 21st April at 2.30 pm.

FULMODESTON

We are having an Easter Sunday service on 31st. March at 2.30 p.m. This wouldn't be our usual Service Day.

On April 7th at 2.30 p.m. we are celebrating our Chapel Anniversary and the preacher will be Mr, Nelson Tubby.

GRESSENHALL

Services at God's Little Cottage are on the 1st and 3rd Sundays of the month with Light refreshments after the service. A warm welcome awaits you all.

A CONTRIBUTION TO FAKENHAM PARISH CHURCH CHRISTMAS TREE FESTIVAL

From Avril Temple:
We thought you would be interested to see the Action for Children tree that Sculthorpe and Fakenham Chapel decorated as part of the Fakenham Parish Church Tree Festival. The total raised was £160.81.



Thanks to everyone who supported us.

At our Carol Service on 17th December we raised £174 from the gift envelopes on the tree (not the same one) and donations – also for Action for Children.



[Photographs: Richard Brunton]

AROUND THE CIRCUIT

For your information, prayer and support

TOFTWOOD

Services: every Sunday at 11.00 a.m. followed by a Bring and Share Lunch on March 3rd, April 7th, May 5th.

Mothering Sunday Service: 11.00 a.m. March 10th, led by Rev Anne.

Good Friday Service: 9.30 a.m. led by Rev Anne.

Easter Day Service: 11.00 a.m. led by Rev Anne.

Weekly Lace Group: 9.30 a.m. -12.00 noon on Mondays.

Coffee Shop with Stalls: 10.00 a.m. – 12.00 noon March 2nd, April 6th, May 4th.

Lunch & Linger: 12.00 noon – 2.30 p.m. March 13th, April 10th, May 8th.

Carpet Bowls: Thursdays 1.45 – 4.00 p.m.

Messy Church: 3.30 – 5.00 p.m. March 26th, April 23rd, May 28th.

Film Club: 2.00 p.m. March 8th, April 12th, May 10th.

Card-making Group: 2.00 – 4.00 p.m. March 27th, April 24th, May 22nd.

GREAT ELLINGHAM

Services: Usually fortnightly on Sundays in the Schoolroom at 2.30 pm.

Mothering Sunday service: 2.30 p.m. March 10th, led by Elizabeth Wright.

Coffee Mornings: 10.00 – 11.00 a.m. March 14th, April 4th, May 2nd.

DEREHAM

Trinity

Services: every Sunday at 10.45 a.m.

Easter Day Breakfast: 9.00 a.m. March 31st (contact Rev Anne Richardson 01362 695582).

Women's Anniversary: 10.45 a.m. April 28th (contact Olwyn Brough 01362 692799).

Mid-week Communion: 10.30 a.m. March 7th, 28th, May 2nd (Contact Jacky Woor 01362 697860)

Lunch Club: 12.00 noon. March 14th, April 11th, May 9th (Contact Rev Anne Richardson 01362 695582).

Coffee Mornings: 10.00 a.m. March 21st, April 18th, May 16th (Contact Jacky Woor 01362 697860)

Cards and Chatter: 10.00 a.m. April 25th, May 23rd (Contact Sylvia Meredith 01362 693425)

Women's Own: 2.45 p.m. March 5th, 12th, 19th, 26th, April 9th, 16th, 23rd, 30th, May 7th, 14th, 21st, 28th (Contact Olwyn Brough 01362 692799)

Coffee Morning at the home of Sylvia and Richard Meredith (12 Elvin Road 01362 693425): 10.00 a.m. – 12.00 noon May 30th.

GRESSENHALL

Services: Services on the 1st and 3rd Sundays of the month at 2.30 p.m. followed by light refreshments.

SWAFFHAM

Services: every Sunday at 10.45 a.m.

World Day of Prayer: 2.00 p.m. March 1st, at Swaffham Parish Church

Mothering Sunday Service: 10.45 a.m. March 10th, all-age service with the Guides and Brownies led by Rev Jacqui.

Good Friday Reflection: 11.00 a.m. March 29th. 'Tragedy to Triumph. The Nails' followed by refreshments.

Easter Day : 10.45 a.m. 'The Transformation of the Cross' led by Rev Jacqui.

Pet Service: 10.45 a.m. April 14th, led by Deacon Jen.

Lent with the Beloved Disciple – Bible Study: 10.00 – 11.00 a.m. March 6th, 13th, 20th.

Power of Prayer Group: Friday 9.30 a.m. Praying for God's world. Phone 01760 722611 for the venue.

The Meeting Place drop-in: 10.00 a.m. – 12.00 noon every Tuesday. Free refreshments. on March 19th there will be a visit from Green Pastures Christian Bookshop.

Coffee Morning and fundraising stall: 9.30 a.m. – 12.00 noon run by –
March 2nd the church
March 30th Bridget Knock
April 6th the church
April 20th Royal British Legion
May 4th the church
May 25th Swaffham Guides

Swaffham Friendship Group: 2.30 p.m.
March 14th Michael Upton – The Samaritans
March 28th Rev Jacqui showing her special crosses



BEETLEY

Services: 10.30 a.m. on the second and fourth Sundays.
6.00 p.m. on the first and third Sundays.

Palm Sunday: 10.30 a.m. March 24th led by Rev Anne

Maundy Thursday: 6.00 p.m. March 28th led by Rev. Anne

Easter Day: 10.30 a.m. March 31st led by Aileen Fox

Special Service: 6.30 p.m. May 19 with speaker Rev Gnanavaram

Prayer Meetings: 9.30 a.m. March 6th, April 3rd. May 1st.

Drop-in: 2.00 – 3.00 p.m. March 6th. 20th. April 3rd, 17th, May 1st, 15th.

Knit 'n' Natter: 2.00 – 3.00 p.m. March 27th, April 24th, May 22nd.

Coffee Mornings: 9.30 – 11.30 a.m. March 23rd, May 25th.

NEW HOLKHAM

Services: 2.30 p.m. last Sunday in the month



April 11th Speaker tbc
April 25th Our Origins – where we have lived previously
May 9th Mel – 'Driving Miss Daisy'
May 23rd Afternoon Tea
Next meeting September 12th.

East Anglian Methodist Historical Society
Talk: 3.00 p.m. May 18th. Please contact Rev Jacqui to book

SCULTHORPE AND FAKENHAM

Services: every Sunday at 11.00 a.m.

Mothering Sunday Service: 11.00 a.m.
March 10th, led by Dee Moden.

Good Friday Service: 3.00 p.m. led by Rev
Jonny and Pippa Cook.

Easter Day Service: 11.00 a.m. led by Sam
Parfitt

Coffee Morning in the Village Hall: 10.00 a.m.
– 12.00 noon March 9th. Coffee, Tea, Cakes
and chat. There will be only one stall.

GARVESTONE

Services: every Sunday at 3.00 p.m. until
March 31st, thereafter at 6.00 p.m.

Good Friday Corporate Meditation: 2.00
p.m.

Prayer Meetings: 2.00 p.m. March 15th, April
19th, May 17th.

**Ecumenical Bible Study and Discussion
Group:** Thursdays at 2.00 p.m. phone
Andrew Durrant (01362 858033) for venue.

Knit and Natter: 10.30 a.m. – 12.00 noon
March 12th, April 9th, May 14th. For venues
contact Lorna Folkes (01362 858391).

THE PILGRIM CHURCH

Blakeney

Community Garden: open daily in March.

Morning Prayers: 10.00 – 11.00 a.m. every
Wednesday in March

Walsingham

Services followed by refreshments: 4.30 p.m.
March 10th, April 14th, May 12th.

HINGHAM

Services: every Sunday at 10.30 a.m.

Coffee Shop with stalls: 10.00 a.m. – 12.00
noon March 2nd, April 6th, May 4th.

Take-a-Break Tuesday Soup Lunch: 12.00
noon – 2.30 p.m. March 12th.

HOLT

Services: every Sunday at 11.00 a.m.

World Day of Prayer: 11.00 a.m. March 1st.

Maundy Thursday: 7.00 p.m. March 28th,
hosted by Wells Methodist Church together
with Wells Parish Church

Good Friday: 9.30 a.m. Coffee and Hot Cross
Buns

10.00 a.m. Service

11.00 a.m. Walk of Witness

Easter Day: 6.00 a.m. Sunrise service on
Spout Hills

7.00 a.m. Breakfast and
Communion

11.00 a.m. Communion service led
by Rev Jonny Bell

Pentecost: 12.00 noon May 19th, Party in the
Memorial Gardens.

Friday Prayer Time: 9.30 a.m. on Fridays.

Mid-week Communion Service: 4.00 p.m.
March 18th, April 15th, May 20th..

Afternoon Teas: 2.00 – 4.00 p.m. March
22nd, April 19th, May 17th.

WENDLING

Services: 10.30 a.m. first Sunday in the month

Coffee Mornings: 10.30 a.m. – 12.00 noon
March 27th, April 24th, May 22nd.

WELLS

with Churches Together in Wells

Services: every Sunday at 11.00 a.m.

Good Friday Service: 10.30 March 29th, led by Rev Elizabeth.

Easter Day Dawn Service: 7.00 a.m. near the Lifeboat House.

Easter Day Service: 11.00 a.m. led by Rev Elizabeth.

Prayer and Praise: Every Wednesday at 10.30 a.m.

World Day of Prayer: 3.00 p.m. March 1st.

Stand Together for Peace Vigil: 12.00 – 12.30 p.m. March 5th on Wells Quay.

Community Lunch at the Congregational Hall: 12.00 noon every Monday

Lent Lunches in the Catholic Hall: time tbc February 16th, 23rd, March 1st, 8th, 15th.

WATTON

Services: every Sunday at 10.30 a.m. (mostly live streamed) and 6.30 p.m.

World Day of Prayer: time tbc March 1st, at the Home (formerly Pentecostal) Church.

Palm Sunday worship: 10.30 a.m. March 24 led by Deacon Jen.

Glorious Easter Day worship: 10.30 a.m. led by Elsie Warby.

Coffee Shop: 9.30 – 11.30 a.m. every Wednesday in the Watton Methodist Centre. March 6th (Book Bonanza), 13th, 20th, 27th, April 3rd, 10th, 17th, 24th, May 1st, 8th, 15th, 22nd, 29th.

Tuesdays at Two: 2.00 p.m. March 5th - Easter Crafting; subsequent dates tbc.

Christian Aid Week: May 12th – 18th. Details tbc.

FULMODESTON

Services: first and third Sundays at 2.30 p.m.

Easter Day Service: 2.30 p.m. led by Rev Jonny

Church Anniversary: 2.30 p.m. April 7 led by Nelson Tubby.

STIBBARD

Services: last Sunday in the month at 11.00 a.m. If this is the fifth Sunday the service will be followed by lunch.

Lunch @ The Centre: 12.30 p.m. March 13th, April 17th, May 8th.

Railway Film Afternoons with Tea and Cake: 2.30 p.m. March 2nd, April 6th, and 7.30 p.m. May 4th.

Conversing with Psalms: 2.30 p.m. March 27th, April 24th, May 22nd.

Circuit Choir Practice: 7.30 p.m. March 1st, 15th, April 5th, 19th, May 3rd, 17th, 31st.

TITTLESHALL

Services: every Sunday at 9.30 a.m.

Good Friday Walk of Witness: 10 a.m. March 29th.

Coffee Mornings: 10.30 a.m. – 12.00 noon every Wednesday.

SPORLE

Services: 11.00 a.m. first and third Sundays

United service with St Mary's (in the chapel) on the third Sunday in the month.

MATTISHALL

Services: every Sunday at 2.30 p.m.

World Day of Prayer: 2.00 p.m. March 1st.

Chapel Anniversary: 2.30 p.m. April 21st, led by Rev Andrew King.

Monthly Saturday Charity Coffee Mornings: 10.00 – 11.30 a.m. March 16th, April 20th, May 18th.

Mattishall Dementia Support Group – The Link: 10.00 a.m. – 12.00 noon March 5th, 19th, April 2nd, 16th, May 7th, 21st.

LITCHAM

Services: every Sunday at 10.30 a.m.

Palm Sunday Processional Service around the village: 10.30 a.m. March 24th.

Good Friday Walk of Witness: 10.00 a.m. March 29th from Tittleshall chapel

Easter Day Service: 9.45 a.m. led by Rev Jacqui

Coffee Mornings: 10.30 a.m. – 12.00 noon every Thursday

CIRCUIT MEETING

March 5th at Toftwood.

All meetings begin at 7.15 p.m.

SAHAM HILLS

Services: every Sunday at 10.30 a.m.

Coffee Morning with hot cross buns: 10.00 a.m. – 12.00 noon March 28th.

Coffee Morning with plant sale: 10.00 a.m. – 12.00 noon May 11th.

REGULAR Weekly dates for prayer Further details elsewhere in *The Link*.

Mon	8.45 am	Morning Prayer	Circuit (on Zoom)
Mon	9.30-12.00	Weekly Lace Group	Toftwood MC
Mon	12.00 noon	Community Lunch in the Congregational Hall	Wells
Tues	10.00-12.00	The Meeting Place Drop-in	Swaffham MC
Tues	10.00-2.00	Open to visitors	Walsingham MC
Tues	10.30 am	Ecumenical Prayers and Coffee	Stibbard M Ch Centre
Tues	2.45 pm	Women's Own	Dereham Trinity MC
Wed	8.45 am	Open Prayer	Circuit (on Zoom)
Wed	9.30 am	Coffee Shop	Watton M Ch Centre
Wed	10.00-11.00	Morning Prayers	Blakeney MC
Wed	10.30-12.00	Coffee Morning	Tittleshall MC
Wed	10.30 am	Prayer and Praise	Wells MC
Thurs	9.30 am	Pilgrim Prayers (not in April or May)	Blakeney MC
Thurs	10.30-12.00	Coffee Morning	Litcham MC
Thurs	1.45-4.00	Carpet Bowls	Toftwood MC
Thurs	2.00 pm	Ecumenical Bible Study and Discussion Group	Garvestone / Mattishall MC
Fri	9.30 am	Friday Prayer Time	Holt MC
Fri	9.30 am	Power of Prayer Group	Swaffham MC
Fri	10.00-2.00	Open to visitors	Walsingham MC
Sat	8.45 am	Praying with the Methodist Church and for the Circuit	Circuit (on Zoom)

DATES FOR PRAYER AND SUPPORT

Continued from page 26

May 8	12.00-2.30	Lunch & Linger	Toftwood MC
May 8	12.30 pm	Lunch @ The Centre	Stibbard M Ch Centre
May 9	12.00 noon	Lunch Club	Dereham Trinity MC
May 9	2.30 pm	Swaffham Friendship Group	Swaffham MC
May 10	2.00 pm	Film Club	Toftwood MC
May 11	10.00-12.00	Coffee Morning with Plant Sale	Saham Hills MC
May 12-18	tbc	Christian Aid Week	Watton MC
May 12	3.00 pm	Easter Offering Service	Dereham Trinity MC
May 12	4.30 pm	Service followed by refreshments	Walsingham MC
May 14	10.30-12.00	Knit and Natter	Garvestone MC
May 15	2.00-3.00	Drop-in	Beetley MC
May 16	10.00 am	Coffee Morning	Dereham Trinity MC
May 17	2.00 pm	Prayer Meeting	Garvestone MC
May 17	2.00-4.00	Afternoon Teas	Holt MC
May 17	7.30 pm	Circuit Choir Practice	Stibbard M Ch Centre
May 18	10.00-11.30	Charity Coffee Morning	Mattishall MC
May 18	3.00 pm	East Anglian Methodist Historical Society Talk	Swaffham MC
May 19	12.00 noon	Pentecost Party in the Memorial Gardens	Holt MC
May 19	6.30 pm	Special Service with Rev Gnanavaram	Beetley MC
May 20	4.00 pm	Mid-week Communion Service	Holt MC
May 21	10.00-12.00	Dementia Support Group—The Link	Mattishall MC
May 22	10.30-12.00	Coffee Morning	Wending MC
May 22	2.00-3.00	Knit 'n' Natter	Beetley MC
May 22	2.00-4.00	Card-making Group	Toftwood MC
May 22	2.30 pm	Conversing with Psalms	Stibbard M Ch Centre
May 23	10.00 am	Cards and Chatter	Dereham Trinity MC
May 23	2.30 pm	Swaffham Friendship Group	Swaffham MC
May 23	9.30-11.30	Coffee Morning	Beetley MC
May 25	9.30-12.00	Coffee Morning and Fundraising Stall	Swaffham MC
May 28	10.00-12.00	Charity Coffee Morning—Fakenham Charity tbc	Helhoughton Village Hall
May 28	3.30-5.00	Messy Church	Toftwood MC
May 30	10.00-12.00	Coffee Morning	12 Elvin Road, Dereham
May 31	7.30 pm	Circuit Choir Practice	Stibbard M Ch Centre

*Great are the works of the LORD;
They are pondered by all who delight
in them.*

Psalm 111 v. 2

DATES FOR PRAYER AND SUPPORT

Continued from page 27

April 5	7.30 pm	Circuit Choir Practice	Stibbard M Ch Centre
April 6	9.30-12.00	Coffee Morning and Fundraising Stall	Swaffham MC
April 6	10.00-12.00	Coffee Shop with Stalls	Hingham MC
April 6	10.00-12.00	Coffee Shop with stalls	Toftwood MC
April 6	2.30 pm	Railway Film Afternoon	Stibbard M Ch Centre
April 7	11.00 am	Service followed by Bring and Share Lunch	Toftwood MC
April 7	2.30 pm	Church Anniversary led by Nelson Tubby	Fulmodeston MC
April 9	10.30-12.00	Knit and Natter	Garvestone MC
April 10	12.00-2.30	Lunch & Linger	Toftwood MC
April 11	12.00 noon	Lunch Club	Dereham Trinity MC
April 11	2.30 pm	Swaffham Friendship Group	Swaffham MC
April 12	2.00 pm	Film Club	Toftwood MC
April 14	10.45 am	Pet Service led by Deacon Jen	Swaffham MC
April 14	4.30 pm	Service followed by refreshments	Walsingham MC
April 15	4.00 pm	Mid-week Communion Service	Holt MC
April 16	10.00-12.00	Dementia Support Group—The Link	Mattishall MC
April 17	12.30 pm	Lunch @ The Centre	Stibbard M Ch Centre
April 17	2.00-3.00	Drop-in	Beetley MC
April 18	10.00 am	Coffee Morning	Dereham Trinity MC
April 19	2.00 pm	Prayer Meeting	Garvestone MC
April 19	2.00-4.00	Afternoon Teas	Holt MC
April 19	7.30 pm	Circuit Choir Practice	Stibbard M Ch Centre
April 20	9.30-12.00	Coffee Morning and Fundraising Stall	Swaffham MC
April 20	10.00-11.30	Charity Coffee Morning	Mattishall MC
April 21	2.30 pm	Chapel Anniversary led by Rev Andrew King	Mattishall MC
April 23	10.00-12.00	Charity Coffee Morning—Save the Children	Helhoughton Village Hall
April 23	3.30-5.00	Messy Church	Toftwood MC
April 24	10.30-12.00	Coffee Morning	Wendling MC
April 24	2.00-3.00	Knit 'n' Natter	Beetley MC
April 24	2.00-4.00	Card-making Group	Toftwood MC
April 24	2.30 pm	Conversing with Psalms	Stibbard M Ch Centre
April 25	10.00 am	Cards and Chatter	Dereham Trinity MC
April 25	2.30 pm	Swaffham Friendship Group	Swaffham MC
April 28	10.45 am	Women's Anniversary led by Rev Daphne Lloyd	Dereham Trinity MC
May 1	9.30 am	Prayer Meeting	Beetley MC
May 1	2.00-3.00	Drop-in	Beetley MC
May 2	10.00-11.00	Coffee Morning	Great Ellingham MC
May 2	10.30 am	Mid-week Communion	Dereham Trinity MC
May 3	7.30 pm	Circuit Choir Practice	Stibbard M Ch Centre
May 4	9.30-12.00	Coffee Morning and Fundraising Stall	Swaffham MC
May 4	10.00-12.00	Coffee Shop with Stalls	Hingham MC
May 4	10.00-12.00	Coffee Shop with stalls	Toftwood MC
May 4	7.30 pm	Railway Film Afternoon	Stibbard M Ch Centre
May 5	11.00 am	Service followed by Bring and Share Lunch	Toftwood MC
May 7	10.00-12.00	Dementia Support Group—The Link	Mattishall MC

DATES FOR PRAYER AND SUPPORT

Continued from page 28

March 20	10.00-11.00	Lent Bible Study	Swaffham MC
March 20	2.00-3.00	Drop-in	Beetley MC
March 21	10.00 am	Coffee Morning	Dereham Trinity MC
March 22	2.00-4.00	Afternoon Teas	Holt MC
March 23	9.30-11.30	Coffee Morning	Beetley MC
March 24	10.30 am	Palm Sunday Service led by Rev Anne	Beetley MC
March 24	10.30 am	Palm Sunday Processional Service around the village	Litcham MC
March 24	10.30 am	Palm Sunday Service led by Deacon Jen	Watton MC
March 25	10.00-12.00	Charity Coffee Morning—RNLI	Helhoughton Village Hall
March 26	3.30-5.00	Messy Church	Toftwood MC
March 27	10.30-12.00	Coffee Morning	Wendling MC
March 27	2.00-3.00	Knit 'n' Natter	Beetley MC
March 27	2.00-4.00	Card-making Group	Toftwood MC
March 27	2.30 pm	Conversing with Psalms	Stibbard M Ch Centre
March 28	10.00-12.00	Coffee Morning with Hot Cross Buns	Saham Hills MC
March 28	10.30 am	Mid-week Communion	Dereham Trinity MC
March 28	2.30 pm	Swaffham Friendship Group	Swaffham MC
March 28	6.00 pm	Maundy Thursday Service led by Rev Anne	Beetley MC
March 28	7.00 pm	Maundy Thursday Service led by Rev Jonny	Wells MC
March 29	9.30 am	Good Friday Service led by Rev Anne	Toftwood MC
March 29	10.00 am	Service followed by Walk of Witness	Holt MC
March 29	10.00 am	Good Friday Walk of Witness	Tittleshall/Litcham MC
March 29	11.00 am	Good Friday Reflection	Swaffham MC
March 29	11.00 am	Good Friday Service led by Rev Elizabeth	Wells MC
March 29	2.00 pm	Good Friday Corporate Meditation	Garvestone MC
March 29	3.00 pm	Good Friday Service led by Rev Jonny & Pippa Cook	Sculthorpe & Fakenham
March 30	9.30-12.00	Coffee Morning and Fundraising Stall	Swaffham MC
March 31	6.00 am	Sunrise Service	Spout Hills, Holt
March 31	7.00 am	Easter Day Dawn Service	near Wells Lifeboat House
March 31	7.00 am	Breakfast and Communion	Holt MC
March 31	9.00 am	Easter Day breakfast	Dereham Trinity MC
March 31	9.45 am	Easter Day Service led by Rev Jacqui	Litcham MC
March 31	10.30 am	Easter Day Service led by Aileen Fox	Beetley MC
March 31	10.30 am	Easter Day Service led by Elsie Warby	Watton MC
March 31	10.45 am	Easter Day Service led by Rev Jacqui	Swaffham MC
March 31	11.00 am	Easter Day Service led by Rev Jonny	Holt MC
March 31	11.00 am	Easter Day Service led by Sam, Parfitt	Sculthorpe & Fakenham MC
March 31	11.00 am	Easter Day Service led by Rev Anne	Toftwood MC
March 31	11.00 am	Easter Day Service led by Rev Elizabeth	Wells MC
March 31	2.30 pm	Easter Day Service led by Rev Jonny	Fulmodeston MC
April 2	10.00-12.00	Dementia Support Group—The Link	Mattishall MC
April 3	9.30 am	Prayer Meeting	Beetley MC
April 3	2.00-3.00	Drop-in	Beetley MC
April 4	10.00-11.00	Coffee Morning	Great Ellingham MC

DATES FOR YOUR PRAYERS AND SUPPORT

Further details on pages 24 - 27

March 1	11.00 am	World Day of Prayer	Holt MC
March 1	tbc	World Day of Prayer	Watton Home Ch
March 1	tbc	Lent Lunch	Wells Catholic Hall
March 1	2.00 pm	World Day of Prayer	Swaffham Parish Ch
March 1	2.00 pm	World Day of Prayer	Mattishall MC
March 1	3.00 pm	World Day of Prayer	Wells MC
March 1	7.30 pm	Circuit Choir Practice	Stibbard M Ch Centre
March 2	9.30-12.00	Coffee Morning and Fundraising Stall	Swaffham MC
March 2	10.00-12.00	Coffee Shop with Stalls	Hingham MC
March 2	10.00-12.00	Coffee Shop with stalls	Toftwood MC
March 2	2.30 pm	Railway Film Afternoon	Stibbard M Ch Centre
March 3	11.00 am	Service followed by Bring and Share Lunch	Toftwood MC
March 5	10.00-12.00	Dementia Support Group—The Link	Mattishall MC
March 5	12.00-12.30	Stand Together for Peace Vigil	Wells Quay
March 5	2.00 pm	Tuesdays at Two—Easter Crafting	Watton MC
March 5	7.15 pm	CIRCUIT MEETING	Toftwood MC
March 6	9.30 am	Prayer Meeting	Beetley MC
March 6	10.00-11.00	Lent Bible Study	Swaffham MC
March 6	2.00-3.00	Drop-in	Beetley MC
March 7	10.30 am	Mid-week Communion	Dereham Trinity MC
March 8	tbc	Lent Lunch	Wells Catholic Hall
March 8	2.00 pm	Film Club	Toftwood MC
March 9	10.00-12.00	Coffee Morning	Sculthorpe Village Hall
March 10	10.45 am	Mothering Sunday Service led by Rev Jacqui	Swaffham MC
March 10	11.00 am	Mothering Sunday Service led by Dee Moden	Sculthorpe & Fakenham MC
March 10	11.00 am	Mothering Sunday Service led by Rev Anne	Toftwood MC
March 10	2.30 pm	Mothering Sunday Service led by Elizabeth Wright	Great Ellingham MC
March 10	4.30 pm	Service followed by refreshments	Walsingham MC
March 12	10.30-12.00	Knit and Natter	Garvestone MC
March 12	12.00-2.30	Take-a-Break Soup Lunch	Hingham MC
March 13	10.00-11.00	Lent Bible Study	Swaffham MC
March 13	12.00-2.30	Lunch & Linger	Toftwood MC
March 13	12.30 pm	Lunch @ The Centre	Stibbard M Ch Centre
March 14	10.00-11.00	Coffee Morning	Great Ellingham MC
March 14	12.00 noon	Lunch Club	Dereham Trinity MC
March 14	2.30 pm	Swaffham Friendship Group	Swaffham MC
March 15	tbc	Lent Lunch	Wells Catholic Hall
March 15	2.00 pm	Prayer Meeting	Garvestone MC
March 15	7.30 pm	Circuit Choir Practice	Stibbard M Ch Centre
March 16	10.00-11.30	Charity Coffee Morning	Mattishall MC
March 18	4.00 pm	Mid-week Communion Service	Holt MC
March 19	10.00-12.00	Dementia Support Group—The Link	Mattishall MC